



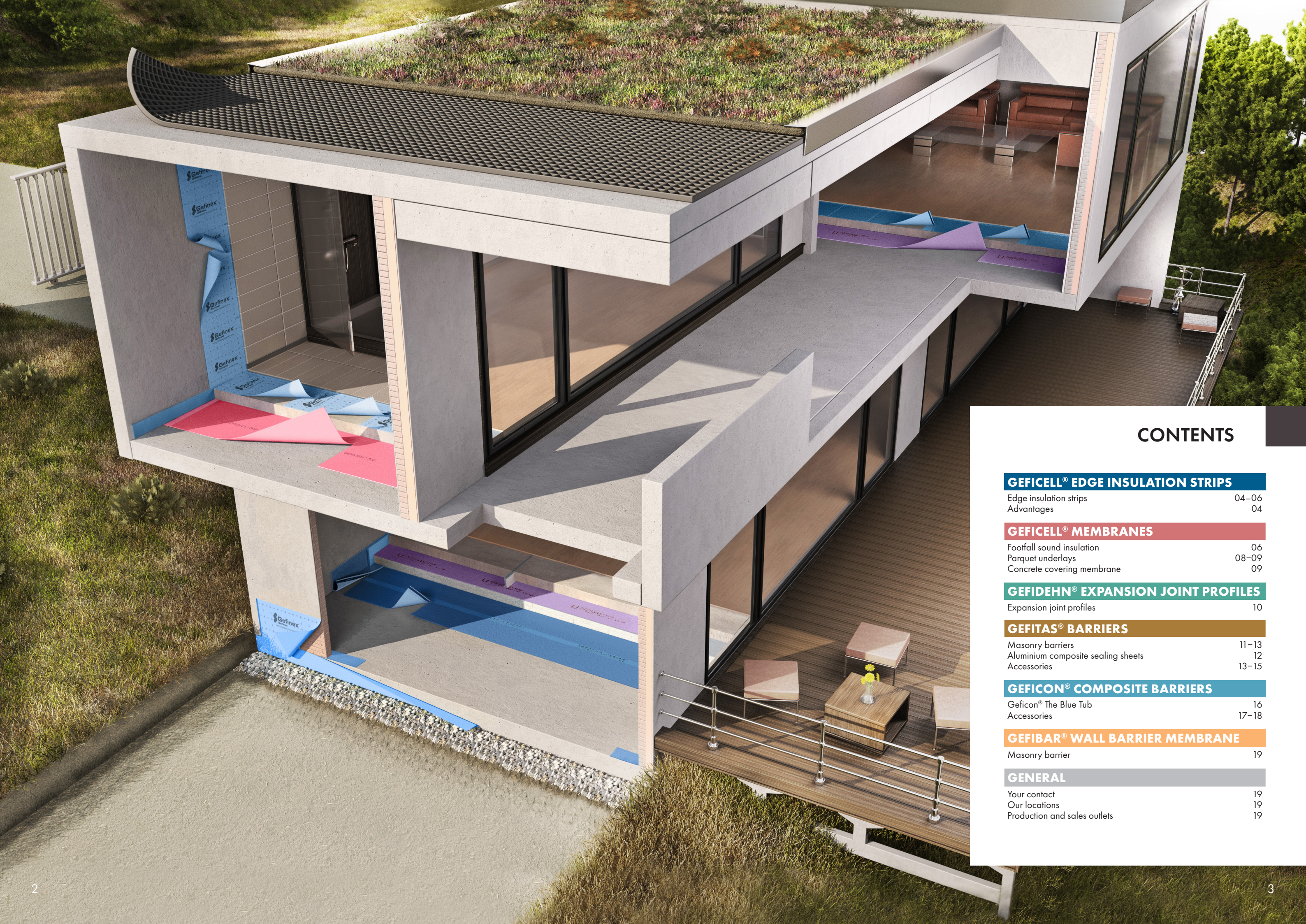
PRODUCT BROCHURE

For further details, go to www.gefinex.com

High-quality & climate-friendly

NOISE AND MOISTURE PROOFING

for buildings



CONTENTS

GEFICELL® EDGE INSULATION STRIPS

Edge insulation strips	04–06
Advantages	04

GEFICELL® MEMBRANES

Footfall sound insulation	06
Parquet underlays	08–09
Concrete covering membrane	09

GEFIDEHN® EXPANSION JOINT PROFILES

Expansion joint profiles	10
--------------------------	----

GEFITAS® BARRIERS

Masonry barriers	11–13
Aluminium composite sealing sheets	12
Accessories	13–15

GEFICON® COMPOSITE BARRIERS

Geficon® The Blue Tub	16
Accessories	17–18

GEFIBAR® WALL BARRIER MEMBRANE

Masonry barrier	19
-----------------	----

GENERAL

Your contact	19
Our locations	19
Production and sales outlets	19

Geficell® PE RDS Standard
EDGE INSULATION STRIPS

PRODUCT DESCRIPTION:

- For creating an edge expansion joint and for soundproofing
- Fire class E as per EN 13501

Item	Thickness [mm]	Height [mm]	Length [m]	Sales unit [rolls]	Sales unit [m]
730003	5	80	50	15	750
730004	5	100	50	12	600
730005	5	120	50	10	500
730008	5	150	50	8	400
730022	8	100	50	12	600

Item	Thickness [mm]	Height [mm]	Length [m]	Sales unit [rolls]	Sales unit [m]
730023	8	120	50	10	500
730039	8	150	50	8	400
712971	10	100	25	12	300
712972	10	120	25	10	250
712976	10	150	25	8	200

Geficell® PE RDS Standard Plus
EDGE INSULATION STRIPS

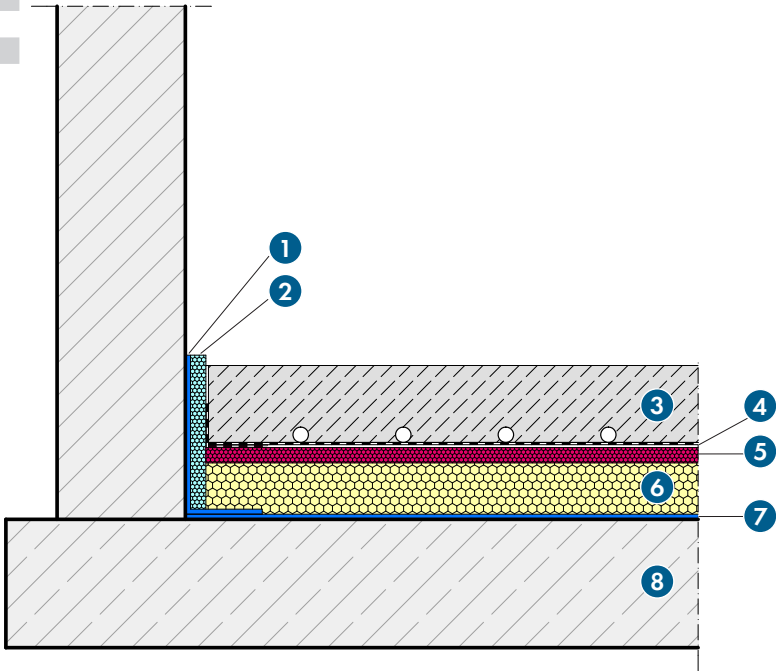
PRODUCT DESCRIPTION:

- For creating an edge expansion joint and for soundproofing
- Particularly suitable for industrial flooring with heights of up to 300 mm
- Fire class E as per EN 13501

Item	Thickness [mm]	Height [mm]	Length [m]	Sales unit [rolls]	Sales unit [m]
710247	8	200	50	6	300
710266	8	250	50	5	250
710268	8	300	50	4	200
714459	10	200	25	6	150
714460	10	250	25	5	125
714461	10	300	25	4	100

The advantages of Geficell®
edge insulation strips

- Ensures your wellbeing thanks to sound insulation
- Avoids additional costs by preventing cracks
- Protects you from noise pollution thanks to footfall sound insulation
- Protects the wall from moisture from fresh screed



1. Gefitas® PE system connection strips R300
2. Geficell® edge insulation strips with film tab
(optional self-adhesive and/or self-adhesive film tabs)
3. Screed (incl. underfloor heating)

4. PE protective film
5. steinophon® 290 TDZ
(PE footfall sound insulation)
Geficell® TDZ FBH 55 Greenline
(PE footfall sound insulation made from renewable raw materials)

6. steinokust® EPS-T 650 (EPS footfall sound insulation plates)
7. Gefitas® PE 3/300 (RS)
(PE sealing sheets, with optional radon protection)
8. Floor plate

Geficell® PE FSR
EDGE INSULATION STRIPS

PRODUCT DESCRIPTION:

- For creating an edge expansion joint and for soundproofing
- With film tab for special use in conjunction with floating screed
- With slits for easy removal of overhang after completion
- Fire class E as per EN 13501

Item	Thickness [mm]	Height [mm]	Length [m]	Sales unit [rolls]	Sales unit [m]
750011	8	100	50	12	600
750012	8	120	50	10	500
750016	8	150	50	8	400
795430	8	180	25	4	100
712974	10	100	25	12	300
712975	10	120	25	10	250
712973	10	150	25	8	200

Geficell® PE FSR Comfort
EDGE INSULATION STRIPS

Allows easy attachment thanks to its
integrated self-adhesive strips

PRODUCT DESCRIPTION:

- For creating an edge expansion joint and for soundproofing
- With film tab for special use in conjunction with floating screed
- With slits for easy removal of overhang after completion
- Adhesive strip on rear
- Fire class E as per EN 13501

Item	Thickness [mm]	Height [mm]	Length [m]	Sales unit [rolls]	Sales unit [m]
712226	8	100	50	12	600
712227	8	120	50	10	500
712228	8	150	50	8	400
750105	10	100	50	12	600
750106	10	120	50	10	500
750107	10	150	50	8	400

GEFICELL® PE FSR SKS 8/ 150 SKS
EDGE INSULATION STRIPS

Prevents foil slippage thanks to
additional adhesive strips

PRODUCT DESCRIPTION:

- For creating an edge expansion joint and sound insulation
- With film tab for special use in conjunction with floating screed
- With slits for easy removal of overhang after completion
- Adhesive strip on the film for fixing to existing intermediate layers
- Adhesive strip on rear
- Fire class E as per EN 13501

Item	Thickness [mm]	Height [mm]	Length [m]	Sales unit [rolls]	Sales unit [m]
715396	8	150	25	8	200

Geficell® PE SK
EDGE INSULATION STRIPS

PRODUCT DESCRIPTION:

- To compensate any unevenness between different construction components
- For acoustic insulation, e.g. in lightweight-construction walls
- Self-adhesive
- Fire class E as per EN 13501

ADVANTAGES:

- Ensures your wellbeing thanks to sound insulation
- Avoids additional costs by preventing cracks
- Protects you from noise pollution thanks to footfall sound insulation

Item	Thickness [mm]	Height [mm]	Length [m]	Sales unit [rolls]	Sales unit [m]
740004	3	50	25	10	250
740007	3	75	25	10	250
740009	3	100	25	10	250

Item	Thickness [mm]	Height [mm]	Length [m]	Sales unit [rolls]	Sales unit [m]
740023	5	50	25	10	250
740025	5	70	25	10	250
740026	5	75	25	10	250
740028	5	100	25	10	250



Geficell® PE PR Mini
EDGE INSULATION STRIPS

PRODUCT DESCRIPTION:

- Edge insulation strips for mineral filling and compensation compounds
- Self-adhesive ribbon fabric
- Geficell® PE RDS Mini can be used in combination with tile adhesive
- Fire class E as per EN 13501

ADVANTAGES:

- Prevents the filling or levelling compound from penetrating into the existing expansion joint
- Ensures your wellbeing thanks to sound insulation
- Avoids additional costs by preventing cracks

Item	Thickness [mm]	Height [mm]	Length [m]	Sales unit [rolls]	Sales unit [m]
715466	5	50	25	4	100 (box)
715603	5	50	25	4	100 (sack)



Geficell® rock wool edge insulation strips
EDGE INSULATION STRIPS

PRODUCT DESCRIPTION:

- Edge insulation strips made from non-flammable rock wool
- Serves as lateral sound insulation for floating screed structures

ADVANTAGES:

- Ensures your wellbeing thanks to sound insulation
- Complies with building material class A1 and guarantees optimal security
- Allows quick, easy installation
- Remains dimensionally stable and resistant to ageing for durable use

Item	Thickness [mm]	Height [mm]	Length [mm]	Pcs. per box
149144-500	12	80	1000	155
149215-500	12	100	1000	115
149214-500	12	120	1000	90



NEW TO THE RANGE

Geficell® PE TDZ 6.0-1.0
FOOTFALL SOUND INSULATION

PRODUCT DESCRIPTION:

- Geficell® PE TDZ 6.0-1.0 footfall sound insulation made from closed-cell PE foam with a footfall sound reduction of more than 21 dB*
- Fire class E as per EN 13501

* Comply with the general approval for use during planning and construction

ADVANTAGES:

- Ensures your wellbeing thanks to its footfall sound reduction
- General approval for use by the construction supervising authority ensures that construction requirements are met
- Recyclability makes disposal easier and reduces your ecological footprint

Item	Thickness [mm]	Width [m]	Length [m]	m² per roll	Rolls per sales unit
711730	6	1.5	75	112.5	1
712450	6	1.0	50	50	1
712449	6	1.0	12.5	12.5	4



Geficell® Geficell PE TDZ FBH 55
FOOTFALL SOUND INSULATION

PRODUCT DESCRIPTION:

- Geficell® PE TDZ FBH 55 footfall sound insulation made from closed-cell PE foam with a footfall sound reduction of up to 17 dB*
- Fire class E as per EN 13501

* Comply with the general approval for use during planning and construction

ADVANTAGE:

- Ensures your wellbeing thanks to its footfall sound reduction
- Load-bearing capacity up to 2 kN/m²
- Offers additional security and reliability with temperature resistance up to 55 °C
- General approval for use by the construction supervising authority ensures that construction requirements are met
- Recyclability makes disposal easier and reduces your ecological footprint



Item	Thickness [mm]	Width [m]	Length [m]	m² per roll	Rolls per sales unit
765746	10	1.5	25	37.5	1

Geficell® PE screed levelling membrane
PE FOAM LEVELLING MEMBRANE

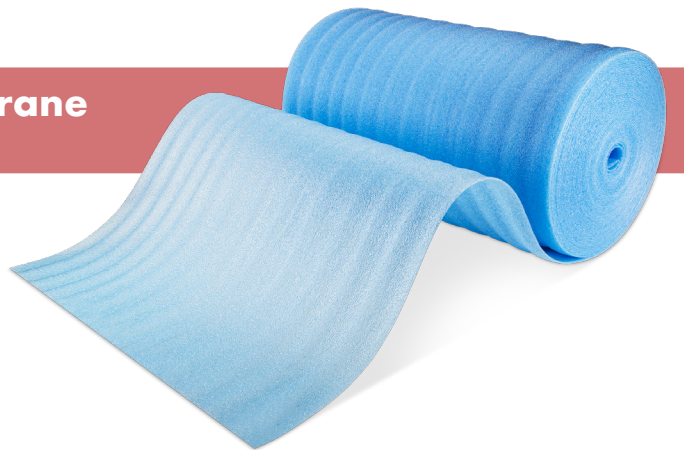
PRODUCT DESCRIPTION:

- Levelling membrane made from closed-cell PE foam
- for compensating for any unevenness under screed
- Fire class E as per EN 13501

ADVANTAGE:

- Recyclability makes disposal easier and reduces your ecological footprint

Item	Thickness [mm]	Width [m]	Length [m]	m² per roll	Rolls per sales unit
712912	5	1.5	75	112.5	1
712913	5	1.0	50	50	1
712914	5	1.0	12.5	12.5	4



Geficell® PE parquet underlay
PE FOAM LEVELLING MEMBRANE

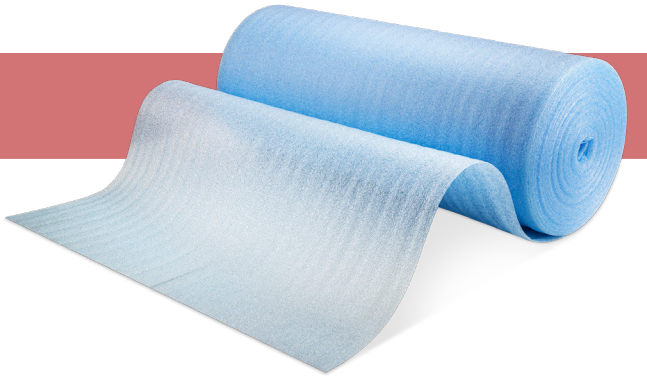
PRODUCT DESCRIPTION:

- PE foam levelling membrane with a bulk density of approx. 20 kg/m³
- Prevents any unevenness

ADVANTAGE:

- Recyclability makes disposal easier and reduces your ecological footprint

Item	Thickness [mm]	Width [m]	Length [m]	m² per roll	Rolls per sales unit
712908	2	1.0	25	25	4
712909	3	1.0	25	25	4
712910	3	1.0	50	50	1
712911	3	1.5	125	187.5	1



Geficell® PE Comfort 120 parquet underlay
LEVELLING MEMBRANE FOR MORE DEMANDING APPLICATIONS

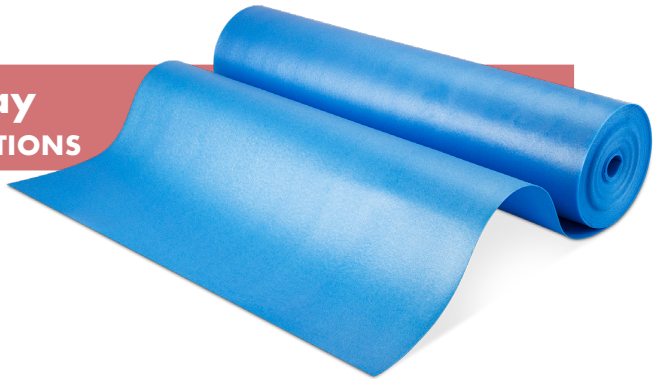
PRODUCT DESCRIPTION:

- Levelling membrane made from closed-cell PE foam with a bulk density of 120 kg/m³ for more demanding applications
- Increased permanent compressive strength
- Smooths out any unevenness
- Fire class E as per EN 13501

ADVANTAGE:

- Recyclability makes disposal easier and reduces your ecological footprint

Item	Thickness [mm]	Width [m]	Length [m]	m² per roll	Rolls per sales unit
713912	2	1.00	25	25	1



Gefitas® PE parquet underlay 2/250
PROTECTS LAMINATE OR PARQUET FLOORS

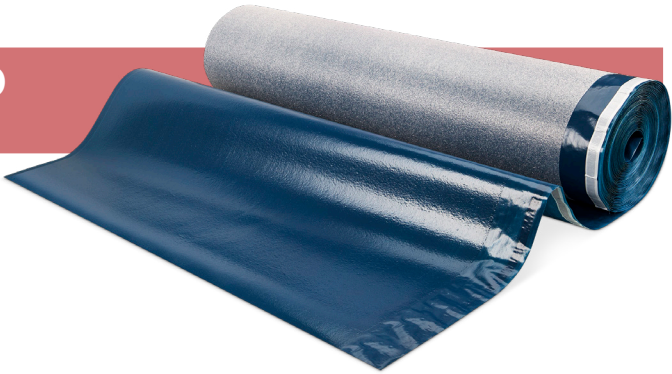
PRODUCT DESCRIPTION:

- Levelling membrane made from closed-cell PE foam with a 250 µm thick PE laminate
- With self-adhesive overlap (100 mm wide) to prevent doubling during laying

ADVANTAGE:

- Prevents moisture from the screed from penetrating laminate or parquet floors

Item	Thickness [mm]	Width [m]	Length [m]	m² per roll	Rolls per sales unit	Sd value*
710100	2	1.25	30	37.5	1	≥ 100 m



Gefitas® PE Comfort Plus parquet underlay
PROTECTS LAMINATE OR PARQUET FLOORS

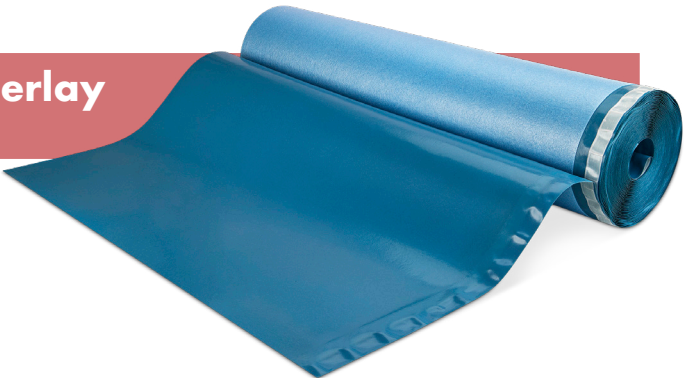
PRODUCT DESCRIPTION:

- Levelling membrane made from closed-cell PE, coated with a 200 µm thick PE laminate
- Increased permanent compressive strength
- With self-adhesive overlap (100 mm wide) to prevent doubling during laying
- Fire class E as per EN 13501

ADVANTAGE:

- Prevents moisture from the screed from penetrating laminate or parquet floors

Item	Thickness [mm]	Width [m]	Length [m]	m² per roll	Rolls per sales unit	Sd value*
713911	2	1.07	25	25	25	≥ 75 m



Geficell® concrete covering membrane
EFFECTIVE PROTECTION AGAINST THE WEATHER

PRODUCT DESCRIPTION:

- Made from closed-cell PE foam
- Fire class E as per EN 13501

ADVANTAGES:

- Protects the fresh cement from the effects of the weather
- Ensures effective frost protection
- Allows even concrete drying
- Minimises the risk of costs arising from weather damage
- Recyclability makes disposal easier and reduces your ecological footprint

Item	Thickness [mm]	Width [m]	Length [m]	m² per roll	Rolls per sales unit
710072	8	1.5	50	75	1
710083	10	1.5	50	75	1



* Sd value = "Water vapour diffusion equivalent air layer thickness" (1 mm = 1000 µm)
The term Sd value is a theoretical value that determines the steam permeability of a building material. The higher the value, the less the moisture that diffuses (creeps) through the material.

Gefidehn® DFP Basic
FOR LIMITING SCREED FIELD SIZES

PRODUCT DESCRIPTION:

- For limiting screed field sizes, to reduce stresses in the screed
- Made from closed-cell PE foam and including a self-adhesive pedestal
- Suitable for underfloor heating
- Fire class E as per EN 13501

ADVANTAGES:

- Easy working with the profile using a utility knife saves you time
- The self-adhesive pedestal ensures quick assembly



Item	Thickness [mm]	Height [mm]	Length [mm]	Sales unit [pcs.]	Sales unit [m]
714730 Basic 60	10	60	1800	70	126
714731 Basic 80	10	80	1800	55	99

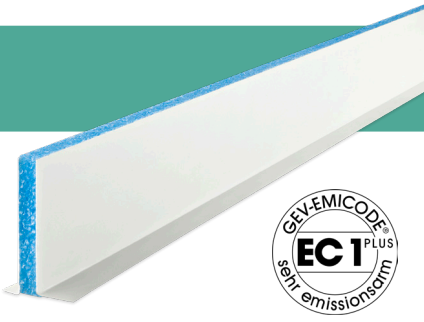
Gefidehn® DFP Standard
FOR LIMITING SCREED FIELD SIZES

PRODUCT DESCRIPTION:

- For limiting screed field sizes, to reduce stresses in the screed
- Made from closed-cell PE foam, force-fitting bonded on both sides with PET foil and with self-adhesive pedestal
- Suitable for underfloor heating
- Fire class E as per EN 13501

ADVANTAGES:

- Easy working with the profile using a utility knife saves you time
- The self-adhesive pedestal ensures quick assembly
- Dimensional stability and accuracy enables precise processing



Item	Thickness [mm]	Height [mm]	Length [mm]	Sales unit [pcs.]	Sales unit [m]
715588	10	40	1800	20	36
715589	10	60	1800	20	36
715590	10	80	1800	20	36
715591	10	100	1800	20	36

Gefidehn® DFP Premium
FOR LIMITING SCREED FIELD SIZES

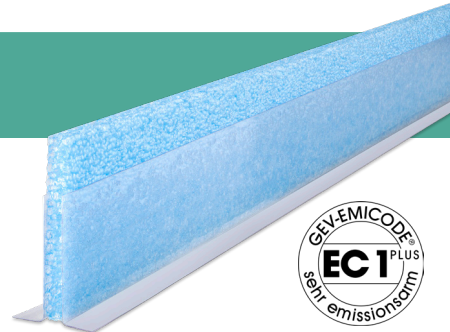
PRODUCT DESCRIPTION:

- For limiting screed field sizes, to reduce stresses in the screed
- Made from closed-cell PE foam, force-fitting bonded on both sides with PET foil and with self-adhesive pedestal
- Suitable for underfloor heating
- Fire class E as per EN 13501

ADVANTAGES:

- Easy working with the profile using a utility knife saves you time
- The self-adhesive pedestal ensures quick assembly
- Dimensional stability and accuracy enables precise processing

* DFP with a length of 1200 mm are fully laminated on both sides with a plastic film, with no PE foam overhang.



Item	Thickness [mm]	Height [mm]	Length [mm]	Sales unit [pcs.]	Sales unit [m]
713479	10	40	1800	20	36
713629	10	50	1800	20	36
713480	10	60	1800	20	36
713481	10	80	1800	20	36
713482	10	100	1800	20	36
711747*	10	60	1200	20	24
711748*	10	80	1200	20	24

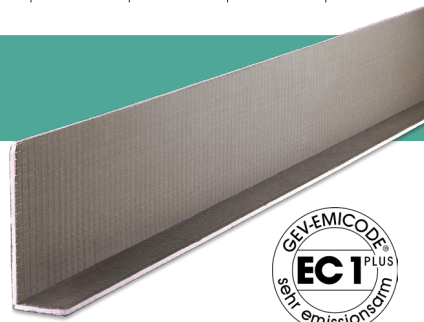
Geficell® screed edge formwork
FOR CREATING SMOOTH EDGES

PRODUCT DESCRIPTION:

- Formwork element made from extruded polystyrene rigid foam
- For creating clean edges on staircases, galleries and landings
- Suitable for use as a plaster base
- Fire protection class E classified

ADVANTAGES:

- Easy to work with to save you time
- Dimensional stability and accuracy enables precise processing



Item	Thickness [mm]	Height [mm]	Length [mm]	Sales unit [pcs.]
713051	6	100	1300	10
713052	6	150	1300	10

OUR BARRIER PORTFOLIO

Moisture damage represents one of the greatest challenges in construction. Once water gets into the masonry, it's usually expensive. As damage of this kind often only becomes apparent some time after the building is completed, the defects must be remedied at a later stage. This involves significant effort and consequently also higher costs.

These comprehensive barrier systems are manufactured without the aid of plasticisers or other harmful additives. This means that they can be safely used in living areas. "We are committed on an ongoing basis to integrating environmentally friendly materials and technologies into our products and to minimising our ecological footprint", explains Sales Manager Torsten Bocho.

THE CLASSIC –
ABOVE AND BELOW THE FLOOR PLATE

Gefitas® PE 3/300
CONSTRUCTION BARRIER ON THE FLOOR PLATE

PRODUCT DESCRIPTION:

- Construction waterproofing on the floor slab to prevent rising ground moisture as per DIN 18533
- 3 mm PE foam laminated with a 300 µm thick PE film
- Adhesive strip integrated on the sides for easy combination of the membranes with each other
- Low installation height in overlap area
- Sd value: 120 (±30)

ADVANTAGES:

- Protects your masonry from ground moisture
- DIN conformity ensures that construction requirements are met
- Reduces your installation costs thanks to fast, easy processing
- This coordinated system makes planning easier for you
- A system developed together with craftsman



Item	Width [m]	Length [m]	Roll m²	Roll [kg]	Rolls per pallet	Sd value*
715688	1.25	40	50	19	8	≥ 100 m



1. Radon-tight self-adhesive outside corner
2. Radon-tight connection tape, 200 mm
3. Gefitas® Alu 1500 RS (Radon-tight PE sealing sheets)
4. Radon-tight self-adhesive inside corner
5. Radon-tight connection tape, 75 mm
6. Radon-tight composite feedthrough
7. Radon-tight pipe sleeve RGD 150
8. Radon-tight pipe sleeve RGD 100
9. Radon-tight earthing strip sleeve

Gefitas® Alu 1500 RS
ALUMINIUM COMPOSITE SEALING SHEETS

PRODUCT DESCRIPTION:

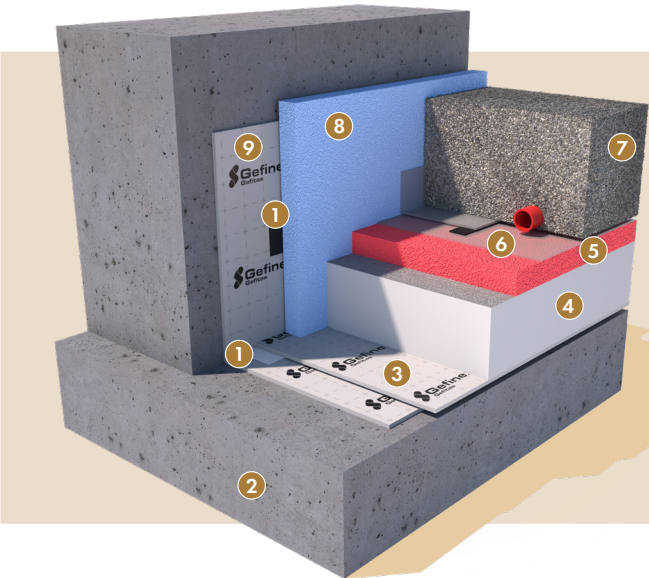
- Flexible, **bitumen-free** aluminium composite sealing sheets for screed structures
- Moisture and vapour barrier in accordance with DIN EN 13967
- Sd value: $\geq 1,500$ m**
- Radon-safe**
- Adhesive strips on both sides for easy combination of the membranes with each other
- Can also be used as a masonry barrier strip in accordance with DIN EN 14909
- Protects floor slab and wall bases in contact with the ground against ground moisture and splashing water as per DIN 18533 Parts 1 and 2: W1.1-E and W1.2-E

ADVANTAGES:

- Emissions-free – protects you from health risks
- Can be installed all year round (can be applied at temperatures between -5 °C and +35 °C)
- High tear resistance means less damage during later work
- Its low weight and 1.5 m width allows comfortable installation
- Its integration into the Gefitas system family makes planning easier



Technical specifications	Dimensions (mm)
Dimensions	1.50 m x 50 m
Thickness	0.37 mm \pm 15%
Mass per unit area	210 g/m ² \pm 15 g
Water vapour permeability	Sd \geq 1500 m
Maximum tensile strength - longitudinal	\geq 600 N/50 mm
Maximum tensile strength - latitudinal	\geq 600 N/50 mm
Elasticity - longitudinal	\geq 30%
Elasticity - latitudinal	\geq 20%
Behaviour in fire as per EN 13501- 1	Class E
Application temperature	-5 °C to +35 °C



- Adhesive strip
- Floor plate
- Gefitas® Alu 1500 RS** (PE sealing sheets with radon protection)
- steinokust® EPS-T 650** (EPS footfall noise insulation plate)
- Geficell® TDZ FBH 55 rot Greenline** (PE footfall noise insulation made from renewable raw materials)
steinophon® 290 TDZ (PE footfall sound insulation)
- PE protective film
- Screed (incl. underfloor heating)
- Geficell® edge insulation strip with film tab** (optional self-adhesive and/or self-adhesive film tab)
- Radon-tight connection tape - 200 mm** (self-adhesive from Gefitas® accessories)

INNOVATIONS



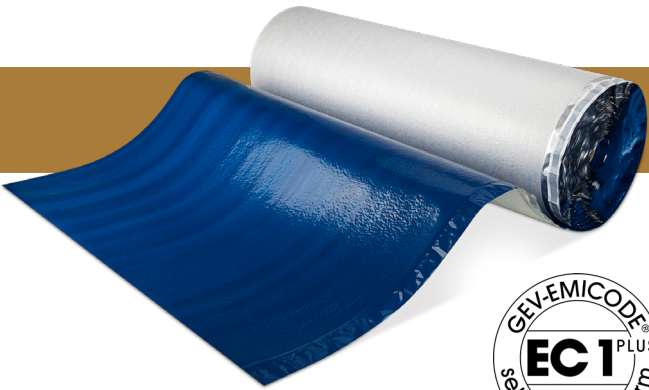
Gefitas® RS
CONSTRUCTION BARRIER ON THE FLOOR PLATE

PRODUCT DESCRIPTION:

- Construction barrier on the floor plate against rising ground moisture in accordance with DIN 13967 and against radon gas exposure from the ground (certified "radon-safe")
- Can also be used as a pure radon barrier beneath the floor plate
- 3 mm PE foam laminated with a 150 µm thick PE film and integrated aluminium film for particularly humid substrates
- Sd value: ≥ 1500**
- Adhesive tape integrated on the sides for combination of the membranes with each other
- For use, see expert opinion

ADVANTAGES:

- Emissions-free and radon-tight – protects you from health risks
- Protects your masonry from ground moisture
- DIN conformity ensures that construction requirements are met
- Reduces your installation costs thanks to fast, easy processing
- This coordinated system makes planning easier for you
- A system developed together with tradesmen
- External MPA monitoring means an independent quality check for you



Item	Width [m]	Length [m]	Roll m ²	Roll [kg]	Rolls per pallet	Sd value*
715393	1.25	40	50	17	8	≥ 1500 m

GEFITAS® ACCESSORIES

Radon-tight connection tape, 75 mm
SELF-ADHESIVE & RADON-TIGHT

PRODUCT DESCRIPTION:

- Connection tape made from self-adhesive aluminium foil
- Fully self-adhesive
- 75 x 30,000 mm

Item	Sales unit
715966	1 roll / 30 running metres



Radon-tight connection tape 200 mm
SELF-ADHESIVE & RADON-TIGHT

PRODUCT DESCRIPTION:

- Connection tape made from self-adhesive aluminium foil
- Fully self-adhesive
- 200 x 30,000 mm

Item	Sales unit
715990	1 roll / 30 running metres



Radon-tight self-adhesive inside corner
INSIDE CORNER MADE FROM RADON-TIGHT ALUBUTYL FOIL

PRODUCT DESCRIPTION:

- Self-adhesive inside corner made from radon-tight alubutyl foil
- With divided adhesive surfaces for convenient processing
- 115 x 115 x 115 mm

Item	Sales unit
715875	4 pieces

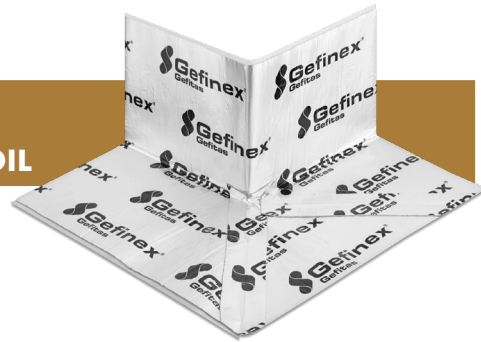


Radon-tight connection tape, 75 mm
OUTSIDE CORNER MADE FROM RADON-TIGHT ALUBUTYL FOIL

PRODUCT DESCRIPTION:

- Self-adhesive outside corner made from radon-tight alubutyl foil
- With divided adhesive surfaces for convenient processing
- 115 x 300 x 300 mm

Item	Sales unit
715876	4 pieces

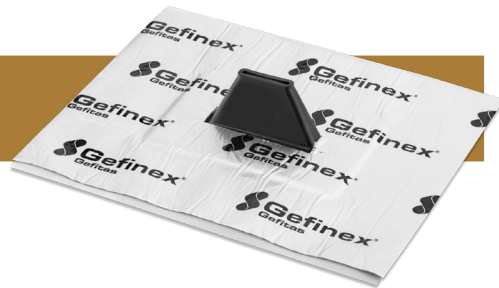


Radon-tight earthing strip sleeve
EARTHING STRIP SLEEVE

PRODUCT DESCRIPTION:

- Earthing strip sleeve for 4 x 30 mm earthing strip
- With sealing sleeve made from a special elastomer for effective radon protection
- 200 x 150 mm

Item	Sales unit
715874	1 pieces

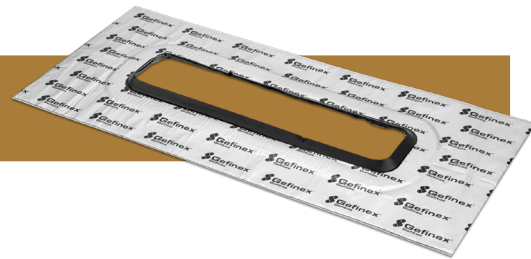


Radon-tight composite feedthrough
WITH RADON-TIGHT ALUBUTYL FILM

PRODUCT DESCRIPTION:

- Diameter 96 x 461 mm (MSH Basic FUBO SR4)
- With sealing sleeve made from a special elastomer for effective radon protection
- Adhesive collar, 750 x 320 mm, with radon-tight alubutyl film

Item	Sales unit
715890	1 piece

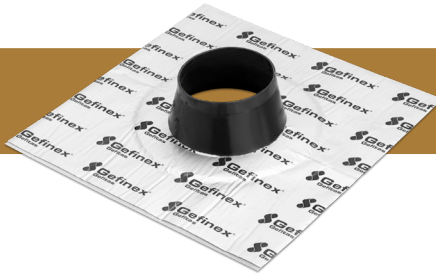


Radon-tight pipe sleeve RGD 100
PIPE SLEEVE WITH ALUBUTYL ADHESIVE COLLAR

PRODUCT DESCRIPTION:

- For pipe diameters 100 – 110 mm
- With sealing sleeve made from a special elastomer for effective radon protection
- 320 x 320 mm alubutyl adhesive collar

Item	Sales unit
715872	1 piece

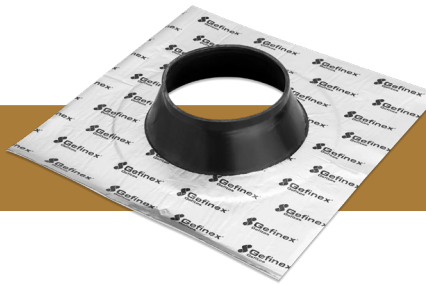


Radon-tight pipe sleeve RGD 100
PIPE SLEEVE WITH ALUBUTYL ADHESIVE COLLAR

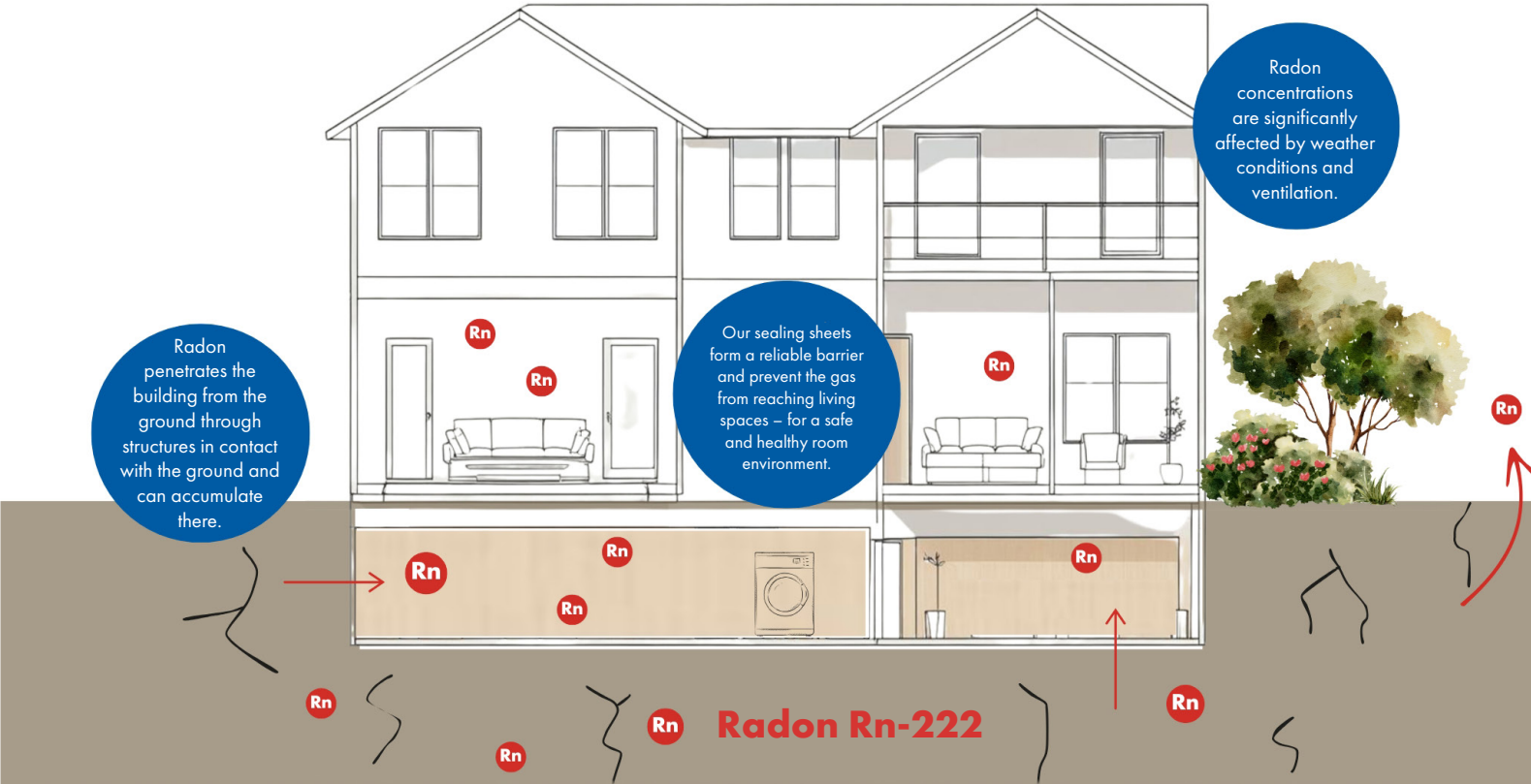
PRODUCT DESCRIPTION:

- For pipe diameters 150 – 165 mm
- With sealing sleeve made from a special elastomer for effective radon protection
- 350 x 350 mm alubutyl adhesive collar

Item	Sales unit
715873	1 piece



Protect your home from radon –
your health comes first!





GEFICON®
THE BLUE TUB

A moisture barrier prevents humidity from penetrating the floor structure through capillary action or the living areas of your home and posing a health risk there.

While traditional barrier systems such as bitumen are applied on top of the floor plate, the **Blue Tub is installed beneath the floor plate**. This has many advantages in new-builds and with “non-pressurised seepage water”, as the floor plate itself protects the **barrier from damage during later work**. In addition, the floor plate bonds with the Geficon as it hardens, providing monolithic moisture protection.



1. Geficon® MSH sleeve

2. Geficon® UDB composite barrier

3. Gefitas® sealant & adhesive

4. Geficon® folding strip

5. Geficon® wall+base
6. Geficon® fixing tape

7. Geficon® sleeve

8. Geficon® inside corners

9. Geficon® outside corners

Take a look at a how-to video showing how the Blue Tub is applied:
www.gefinex.com/produkte/geficon-die-blaue-wanne



To the video

APPLICATIONS

IN NEW-BUILDS

The Blue Tub is ideal for non-pressurised seepage water (water impact class W-1E in accordance with DIN 18533:2017).

COMBINED WITH WATERPROOF CONCRETE

In residential basements, the Blue Tub can provide additional moisture protection together with the White Tub (waterproof concrete) – particularly where there is (partially) pressurised water (W-2E or higher). This keeps the interior of the basement dry and usable, even close to the walls.

IN RENOVATIONS

Even in renovations, the Blue Tub provides reliable protection against moisture. The Geficon is installed in an L-shape at the edge of the floor, and the Blue Tub is attached to the wall using flexible adhesive – ready for plastering. The floor surface is loosely covered with Geficon, overlapping with the L-shape, after which the screed can be applied.

Geficon® UDB composite barrier
MASONRY BARRIER

PRODUCT DESCRIPTION:

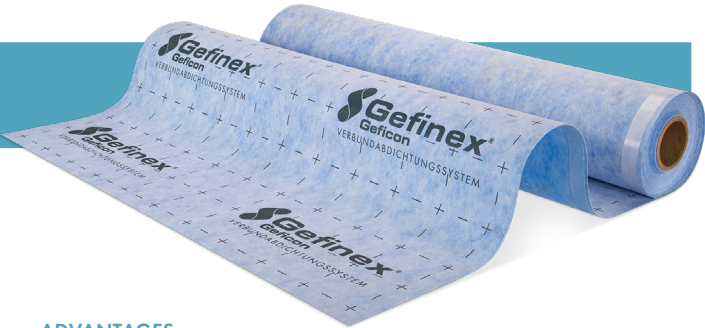
- Masonry barrier beneath the floor plate **against rising ground moisture** in accordance with water impact class W-1E DIN 18533 and non-pressurised water in accordance with ÖNorm B 3692
- Polyethylene sealing sheets, fleece-backed on both sides
- Adhesive tape integrated longitudinally for combination with the overlapping joints
- Once the cement has cured, the membrane forms a firm bond with the concrete



Item	Width [mm]	Length [m]	Roll [sqm]	Roll [kg]	Rolls per pallet	Sd value*
714704	1	30	30	9	28	≥ 150 m

ADVANTAGES:

- This tested system guarantees you a high level of sealing reliability
- Installation beneath the floor plate means no damage during later work
- As the masonry barrier can be omitted, this reduces overall costs
- Reduces your installation costs thanks to fast, easy processing
- This coordinated system makes planning easier for you



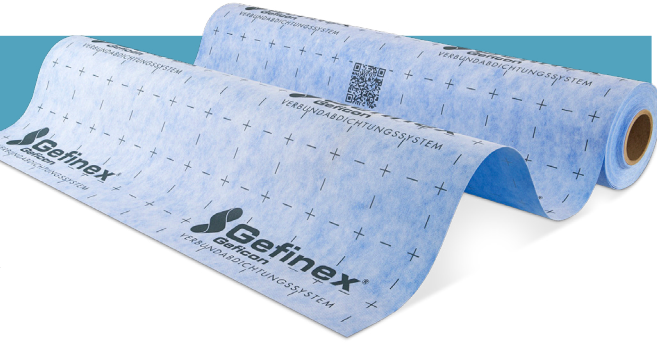
Geficon® wall+base
BARRIER AGAINST GROUND MOISTURE

PRODUCT DESCRIPTION:

- Barrier **against ground moisture and non-accumulating seepage water on floor plates in contact with the ground and exterior wall surfaces**, in acc. with water impact class W-1E in accordance with DIN 18533 and non-pressurised water in accordance with ÖNorm B 3692
- Polyethylene sealing sheets, fleece-backed on both sides
- Is bonded to the wall in contact with the ground, base area and front side of the floor plate with the Geficon formwork strips using a mineral-based construction adhesive
- Perimeter and thermal insulation plates can be attached directly to the barrier with a construction adhesive

ADVANTAGES:

- This tested system guarantees you a high level of sealing reliability
- Installation beneath the floor plate means no damage during later work
- Reduces your installation costs thanks to fast, easy processing
- As the masonry barrier can be omitted, this reduces overall costs
- This coordinated system makes planning easier for you



Item	Width [mm]	Length [m]	Roll [sqm]	Roll [kg]	Rolls per pallet	Sd value*
714703	1	30	30	9	28	≥ 150 m
715400	0,5	30	15	5,5	28	≥ 150 m

GEFICON® ACCESSORIES

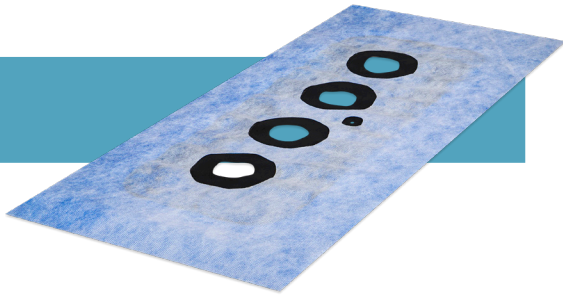
Geficon® MSH sleeve
FOR PERFECTLY CONNECTING THE GEFICON® UDB

PRODUCT DESCRIPTION:

- For perfectly connecting the Geficon® UDB to any commercially available multi-utility home connection
- Made of polyethylene film, laminated with a polypropylene fleece
- Pre-cut holes for pipe feeds and cables, wrapped in an EPDM coating

ADVANTAGES:

- Reduces your installation costs thanks to fast, easy processing by simply slipping the sleeve on
- This coordinated system makes planning easier for you



Item	Diameter [mm]	Width [mm]	Length [mm]	Pcs. per box
131423	4 x 45 + 1 x 10	320	750	1

GEFICON® SEALANT + ADHESIVE
PERMANENTLY ELASTIC ADHESIVE

PRODUCT DESCRIPTION:

- Permanently elastic adhesive based on a silane-modified polymer
- For barriers for end joints and vertical butt joints in Geficon® barrier systems
- For repairing damage

ADVANTAGES:

- Reduces your installation costs thanks to fast, easy processing
- Its solvent-free composition guarantees you an environmentally friendly and healthy application
- This coordinated system makes planning easier for you

Item	Contents [ml]	Box [kg]	Cartridges per box
715117	300	3	12



Our composite barrier offers you a complete barrier system for the floor plate, basement wall and base area. It interrupts capillary water transport reliably and hence prevents moisture from penetrating the floor plate and the surrounding masonry.

Geficon® fixing tape
FOR SAFE, ADDITIONAL BARRIERS



PRODUCT DESCRIPTION:

- Highly elastic, formable butyl adhesive tape
- For safe, additional barriers for pipe openings and corners in the Geficon® UDB barrier system
- For repairing damage

ADVANTAGES:

- Simplifies processing thanks to its high stretchability and flexibility
- Ensures long-lasting and secure bonding thanks to its excellent adhesive strength
- Its solvent-free composition guarantees you an environmentally friendly and healthy application
- Reduces your installation costs thanks to fast, easy processing
- This coordinated system makes planning easier for you

Item	Width [mm]	Length [m]	Box	Pcs. per box
715116	100	5	6	4

Geficon® folding strip
FLEECE-LAMINATED BARRIER STRIPS



PRODUCT DESCRIPTION:

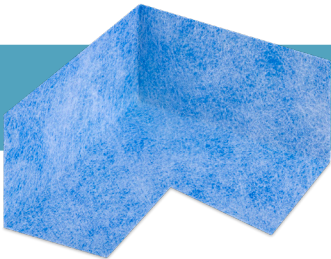
- Polyethylene barrier strips, fleece-backed on both sides
- For barriering inside and outside corners at formwork height against rising ground moisture and non-accumulating seepage water
- Easy to adjust and secure in the edge formwork of the floor plate
- Secure connection between the floor plate barrier and wall barrier
- Fixing using Geficon® Sealant + Adhesive

ADVANTAGE:

- This coordinated system makes planning easier for you

Item	Width [mm]	Length [m]	Roll [sqm]	Box [kg]	Rolls per box
715306	300	30	9.9	3.0	1

Geficon® inside/outside corners
FORMWORK MADE FROM POLYETHYLENE FILM



PRODUCT DESCRIPTION:

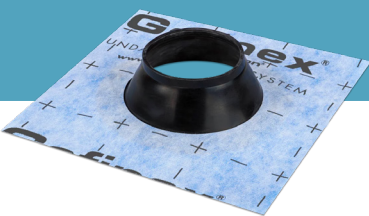
- Formwork made from polyethylene film, laminated on both sides with a polypropylene fleece
- For sealing corners in the Geficon® UDB barrier system
- Fixing using Geficon® Sealant + Adhesive or mineral construction adhesive

ADVANTAGES:

- Saves you time and makes application easier thanks to a precise fit
- This coordinated system makes planning easier for you

Item	Name	Width [mm]	Height [mm]	Box [kg]	Corners per box
715115	Inside corners	120	60	0.2	10
715114	Outside corners	110	60	0.2	10

Geficon® sleeve
FOR A TIGHT CONNECTION



PRODUCT DESCRIPTION:

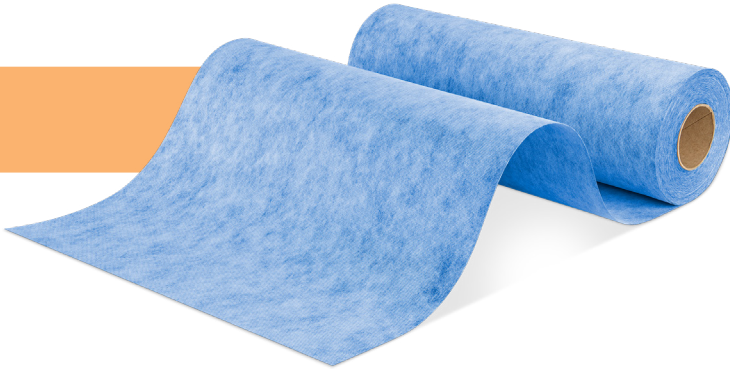
- Made of polyethylene film, laminated on both sides with a polypropylene fleece and EPDM formwork
- For a tight connection for the Geficon® UDB and piping (e.g., sewer pipes; conduits; etc.)
- Bonding the sleeve with Geficon® Sealant & Adhesive to the Geficon® UDB sealing sheet
- Different sleeve sizes, just right for all common pipes

ADVANTAGES:

- Reduces your installation costs thanks to fast, easy processing
- This coordinated system makes planning easier for you

Item	Ø cm	Width [mm]	Length [mm]	Box [kg]	Sleeves per box
715110	75	250	250	0.3	4
715111	100	320	320	0.45	4
715112	125	320	320	0.5	4
715113	150	350	350	0.6	4

Gefibar® masonry barrier
WALL BARRIER MEMBRANE



PRODUCT DESCRIPTION:

- Multi-layer plastic membrane
- 500 µm thick
- Polyethylene film laminated with polypropylene fleece
- Fire class E as per EN 13501
- Various roll sizes available

ADVANTAGES:

- Protects your building from moisture thanks to its excellent vapour seal
- Its excellent flexibility means more convenient application
- Its compatibility with all mineral adhesives (DIN-compliant) makes processing easier
- External DIBt monitoring means an independent quality check for you

Item	Width [mm]	Length [m]	Roll [sqm]	Rolls per sales unit
715401	12.5	30	3.75	1
715408	18.5	30	5.55	1
715402	25.5	30	7.5	1
715404	37.5	30	11.25	1
715405	50	30	15	1
715403	62.5	30	18.75	1
715406	75	30	22.50	1
715407	100	30	30	1



YOUR CONTACT

We look forward to hearing from you by phone, e-mail or in person!

Customer service: +49 (0) 3395 752 2100 | info@gefinex.com

www.gefinex.com

LOCATIONS

Germany | Austria | Poland

PRODUCTION
& SALES OUTLETS

Steinbacher Dämmstoff GmbH /
Steinbacher Vertriebs GmbH
Erpfendorf / Austria

Steinbacher Izoterm
Warsaw / Poland

Gefinex GmbH
Pritzwalk / Germany



